



- Lightweight, compact design for farm or work applications
- For use with low viscosity petroleum fluids such as diesel & Kerosene
- Delivers up to 8GPM/30LPM
- Duty cycle: 30min.

### Equipped with

- 13ft. (4m) delivery hose
- 1pc Steel suction pipe
- 1pc Aluminum manual nozzle
- 2" tank adapter



### Non included options:



Model # 18311002

Model # 15221002

Item No.	Pump Rate (GPM/LPM)	Voltage (V)	Inlet (Inch)	Outlet (Inch)	Model of Nozzle	Package Dimension (cm)	Weight (kgs)
10303001	8/30	12	3/4	3/4	18321001	35x35x20	8.5
10303002	8/30	24	3/4	3/4	18321001	35x35x20	8.5
10303003	8/30	120	3/4	3/4	18321001	35x35x20	8.5
10303004	8/30	230	3/4	3/4	18321001	35x35x20	8.5



## Heavy Duty Fuel Transfer Pumps (vane)

- Self-priming vane pump designed for tank or barrel mounting
- Provides safer, more efficient transfer of diesel & kerosene
- Duty Cycle: 30 min.

### Equipped with

- 13ft. (4m) delivery hose
- 1pc Steel suction pipe
- 1pc Aluminum manual nozzle / Auto shut-off nozzle
- 2" tank adapter



Listed Motor

### More options:



With Auto shut-off nozzle  
Model # 18311002



With digital meter  
Model #15221002



With Mechanical Meter  
Model #1511200

Item No.	Pump Rate (GPM/LPM)	Voltage [V]	Inlet [Inch]	Outlet [Inch]	Model of Nozzle	Package Dimension [cm]	Weight [kgs]
10305700	15/57	12	1	3/4	Manual	42x38x28	15
10305701	15/57	24	1	3/4	Manual	42x38x28	15
10307600	20/76	12	1	1	Manual	42x38x36	16
10307601	20/76	24	1	1	Manual	42x38x36	16
10305702	15/57	120	1	3/4	Manual	42x38x28	15
10305720	15/57	230	1	3/4	Manual	42x38x28	15
10305723	15/57	12	1	3/4	Automatic	42x38x28	16
10305724	15/57	24	1	3/4	Automatic	42x38x28	16
10305725	15/57	120	1	3/4	Automatic	42x38x28	16
10305726	15/57	230	1	3/4	Automatic	42x38x28	16



- Electric gear pump for use with low viscosity petroleum fluids such as kerosene and diesel fuel
- Compact, efficient and reliable
- Duty cycle: 30 min.

### Equipped with

- 13ft. (4M) delivery rubber hose
- 1pc Steel suction pipe
- 1pc Aluminum manual nozzle / Auto shut-off nozzle
- 2" tank adapter



### Non included options:



Model # 18311002



Model #15111200



Model #15221002



Listed Motor

Item No.	Pump Rate (GPM/LPM)	Voltage (V)	Inlet (Inch)	Outlet (Inch)	Model of Nozzle	Package Dimension (cm)	Weight (kgs)
10305705	15/57	12	1	3/4	Manual	45x40x30	14
10305706	15/57	24	1	3/4	Manual	45x40x30	14
10305707	15/57	120	1	3/4	Manual	45x40x30	14
10305722	15/57	230	1	3/4	Manual	45x40x30	14
10305727	15/57	12	1	3/4	Automatic	45x40x30	15
10305728	15/57	24	1	3/4	Automatic	45x40x30	15
10305729	15/57	120	1	3/4	Automatic	45x40x30	15
10305730	15/57	230	1	3/4	Automatic	45x40x30	15



## Battery Kits

- Small size, reliable and simple installation, ideal for construction sites, boats and in agriculture
- Electric motor is closed type in protection class IP 55
- Self-priming, volumetric, rotating vane pump, equipped with by-pass valve
- Easy for you to cut the fuel hose to two pieces as 1pc delivery hose & 1pc suction hose per your demand
- Duty Cycle: 30 Min.
- Come with 13ft./4m of fuel hose & manual dispensing nozzle



#10305609/#10305613/#10307002



#10304010/#10304011



Item No.	Pump Rate [GPM/LPM]	Voltage [V]	Diameter of Hose	Package Dimension [cm]	Weight [kgs]
<b>10304010</b>	10/40	12	3/4"	30x30x18	8.5
<b>10304011</b>	10/40	24	3/4"	30x30x18	8.5
<b>10305609</b>	15/57	12	3/4"	31x34x42	11
<b>10305613</b>	15/57	24	3/4"	31x34x42	11
<b>10307002</b>	9/35	12	1"	31x34x45	11
	19/70	24			





- Standard duty, self-priming vane pump, fitted with bypass system to prevent motor overload
- Mechanical meter/Digital meter valid for non commercial applications only

### Equipped with:

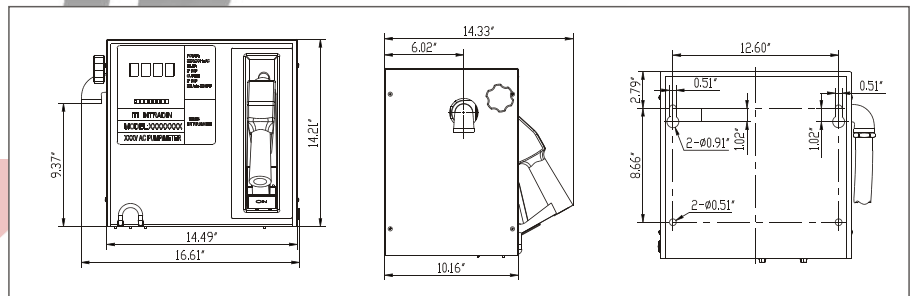
- 13ft./4m delivery hose
- 6.5ft./2m 1" suction hose with filter
- 1" Automatic Nozzle



Digital meter with apheliotropic display screen, simple to calibrate in the field



Separated nozzle holder provided with pump start/stop lever



Patent Pending

Item No.	Pump Rate (GPM/LPM)	Voltage (V)	Model of Pump	Meter	Model of Nozzle	Package Dimension (cm)	Weight (kgs)
<b>10306600</b>	18/66	120	17330660	Mechanical	18312002	49x43x43	24
<b>10308200</b>	22/80	120	17330820	Mechanical	18312002	49x43x43	24
<b>10306601</b>	18/66	120	17330660	Digital	18312002	49x43x43	24
<b>10308201</b>	22/80	120	17330820	Digital	18312002	49x43x43	24
<b>10305603</b>	15/57	230	17330560	Mechanical	18311002	49x43x43	23
<b>10308003</b>	22/80	230	17310801	Mechanical	18312002	49x43x43	24
<b>10305604</b>	15/57	230	17330560	Digital	18311002	49x43x43	23
<b>10308004</b>	22/80	230	17310801	Digital	18312002	49x43x43	24

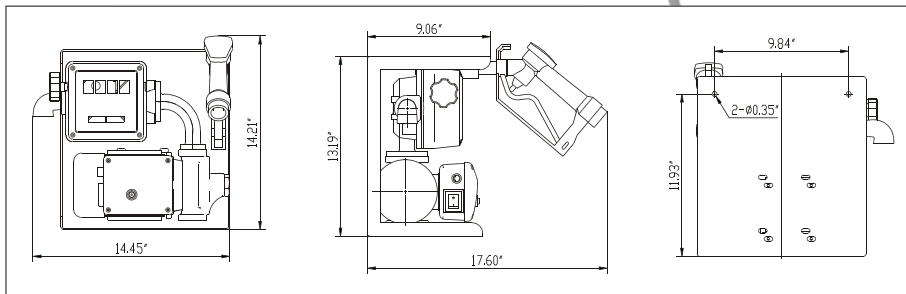


## Fuel Transfer Pump Kits

- Ideal for refuelling machinery, cars, vans and light trucks
- Can be wall or tank mounted
- Standard duty, fitted with bypass system to prevent motor overload

### Equipped with:

- Manual dispensing nozzle
- 13ft./4m delivery hose
- 6.5ft./2m suction hose with filter



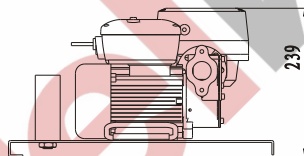
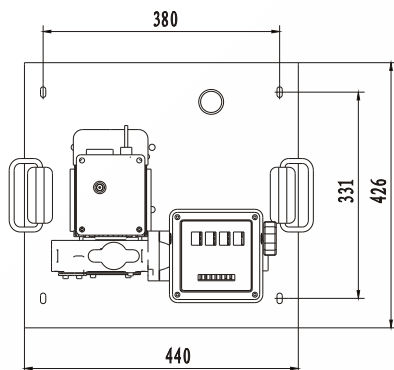
Item No.	Pump Rate (GPM/LPM)	Voltage (V)	Model of Pump	Model of Meter	Package Dimension (cm)	Weight (kgs)
10306602	18/66	120	17330660	15111200	47x33x40	20
10308202	22/80	120	17330820	15111200	47x33x40	20
10305601	15/57	230	17330560	15111200	47x33x40	18
10308001	22/80	230	17310800	15111200	47x33x40	18
10305627	15/57	12	17530560	Not Available	47x33x40	18
10305628	15/57	24	17530561	Not Available	47x33x40	18
10307006	9/35	12	17530700	Not Available	47x33x40	18
	19/70	24				
10306603	18/66	120	17330660	Not Available	47x33x40	18
10308203	22/80	120	17330820	Not Available	47x33x40	18
10305602	15/57	230	17330560	Not Available	47x33x40	18
10308002	22/80	230	17310800	Not Available	47x33x40	18



- 57-120LPM/15-32GPM pump mounted on a bracket for wall or tank mounting
- Easy to install, versatile and compact
- Mechanical Meter is optional, meter accuracy  $\pm 1\%$

### Equipped with:

- Mechanical meter
- Manual dispensing nozzle
- 4m / 13ft. delivery hose
- 2m / 6.5ft. suction hose with filter



Item No.	Pump Rate (GPM/LPM)	Voltage (V)	Model of Pump	Model of Nozzle	Model of Meter	Package Dimension (cm)	Weight (kgs)
<b>10305600</b>	15/57	230	17330560	18322001	15111200	50.5x44.5x45	19
<b>10307200</b>	20/72	230	17330720	18322001	15111200	50.5x44.5x45	19
<b>10308005</b>	22/80	230	17310801	18322001	15111200	50.5x44.5x45	20
<b>10310000</b>	26/100	230	17311000	18322001	15111200	50.5x44.5x45	24
<b>10312000</b>	32/120	230	17311200	18322001	15111200	50.5x44.5x45	27
<b>10305605</b>	15/57	12	17530560	18322001	15111200	50.5x44.5x45	19
<b>10305606</b>	15/57	24	17530561	18322001	15111200	50.5x44.5x45	19
<b>10307001</b>	9/35	12	17530700	18322001	15111200	50.5x44.5x45	19
	19/70	24					
<b>10306606</b>	18/66	120	17330660	18322001	15111200	50.5x44.5x45	19
<b>10308206</b>	22/80	120	17330820	18322001	15111200	50.5x44.5x45	24
<b>10309001</b>	24/90	120	17330900	18322001	15111200	50.5x44.5x45	24
<b>10312001</b>	32/120	120	17331200	18322001	15111200	50.5x44.5x45	27



## Drum Pump Kit

- Simple and efficient for transferring fuel from the drum & tank in any situation
- Mechanical display reset. Meter accuracy +/- 1%
- Meter valid for non commercial applications only

### Equipped with:

- Diesel pump
- Manual dispensing nozzle
- 4m / 13ft. delivery hose
- 2m / 6.5ft. suction hose with filter



Quick change coupling connection



Item No.	Pump Rate (GPM/LPM)	Voltage [V]	Model of Pump	Model of Nozzle	Model of Meter	Package Dimension [cm]	Weight [kgs]
10307000	9/35	12	17530700	18322001	Not available	41.5x27.5x27	10.5
	19/70	24					
10305610	15/57	12	17530560	18322001	Not available	41.5x27.5x27	10.5
10305611	15/57	24	17530561	18322001	Not available	41.5x27.5x27	10.5
10307005	9/35	12	17530700	18322001	15111200	41.5x27.5x27	12.5
	19/70	24					
10305617	15/57	12	17530560	18322001	15111200	41.5x27.5x27	12.5
10305618	15/57	24	17530561	18322001	15111200	41.5x27.5x27	12.5
10305612	15/57	230	17330560	18322001	15111200	45.5x30x29	11.5
10307201	20/72	230	17330720	18322001	15111200	45.5x30x29	11.5
10305619	15/57	230	17330560	18322001	Not available	45.5x30x29	9.5
10307207	20/72	230	17330720	18322001	Not available	45.5x30x29	9.5
10306604	18/66	120	17330650	18322001	15111200	45.5x30x29	9.5
10308204	22/80	120	17330820	18322001	15111200	45.5x30x29	9.5
10306605	18/66	120	17330660	18322001	Not available	45.5x30x29	9.5
10308205	22/80	120	17330820	18322001	Not available	45.5x30x29	9.5





- Ideal for delivering oil from a drum anywhere in the workshop
- Come equipped with a self-priming gear pump and a digital oil control valve
- Oil viscosity up to 2000 Cst

### Equipped with:

- Oil pump
- Oil control valve
- 4m/13ft. 1/2" delivery oil hose (SAE 100R1)
- 2m/6.5ft. suction hose with filter



Trolley is included

Item No.	Flow Rate (Quarts Per Minute /LPM)	Voltage (V)	Model of Pump	Max. Pressure (PSI/ Bar)	Package Dimension(cm) Trolley Pump Kit		Weight (kgs)
10300900	10/9	230	17320090	175/12	95x80x24	42x22x29	50
10300901	10/9	230	17320091	360/25	95x80x24	42x22x29	50
10301400	15/14	230	17320140	175/12	95x80x24	42x22x29	50
10304000	42/40	230	17320400	145/10	95x80x24	42x27x28	60
10300902	11/10	120	17320100	175/12	95x80x24	42x22x29	50
10300903	11/10	120	17320101	360/25	95x80x24	42x22x29	50
10301801	18/17	120	17320180	175/12	95x80x24	42x22x29	50
10305000	52/50	120	17320500	72/5	95x80x24	42x27x28	60
10305001	52/50	120	17320501	145/10	95x80x24	42x27x28	60