

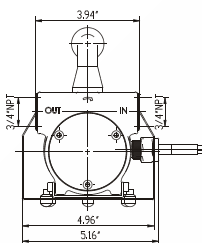
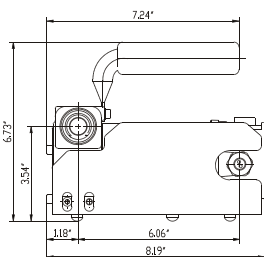


DC Diesel Pump

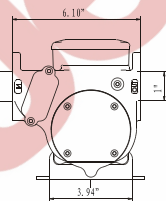
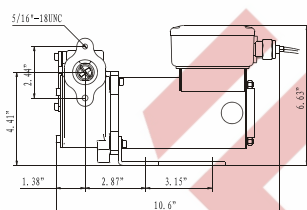
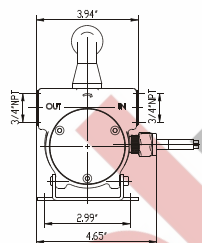
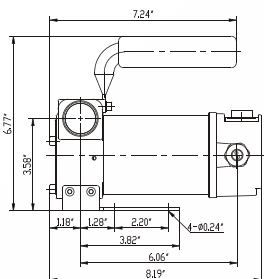
- Self priming diesel transfer pumps with 12V or 24V DC motor
- Electric motor is closed type in protection class IP55
- Bypass valve built into pump casing
- Carrying handle available on 10GPM/ 40LPM pumps
- The model 17530700 can be used with both tension
- Duty cycle: 30 min.
- Includes 2m/6.5ft. cable with alligator clamps



#17510400/#17510401



#17510404/#17510405



#17530560/#17530561/#17530700

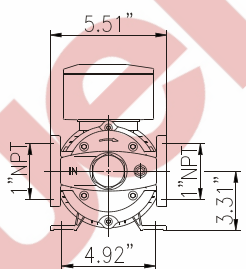
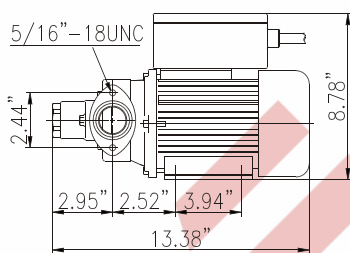
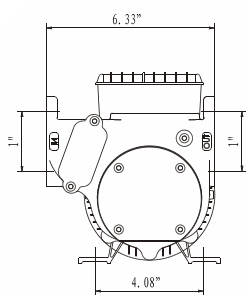
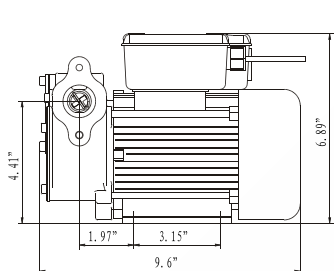
Item No.	Flow Rate (GPM/LPM)	Voltage (V)	Current (Amp)	Suction Height (m/ft.)	Max. Pressure (PSI/BAR)	RPM	Inlet/Outlet (Inch)	Package Dimension (cm)	Weight (kgs)
17510400	10/40	12	24	2/6.5	17/1.2	3200	3/4"	24x16x21	5
17510401	10/40	24	13	2/6.5	17/1.2	3200	3/4"	24x16x21	5
17510404	10/40	12	24	2/6.5	17/1.2	3200	3/4"	24x16x21	5
17510405	10/40	24	13	2/6.5	17/1.2	3200	3/4"	24x16x21	5
17530560	15/57	12	35	2/6.5	17/1.2	2800	1"	24x34x24	8
17530561	15/57	24	30	2/6.5	17/1.2	2800	1"	24x34x24	8
17530700	9/18	12/24	30	2.5/1.5	22/1.5	1800/3600	1"	24x34x24	8
	35/70				29/2				



- Powerful, dependable and economical self priming diesel transfer pump with 120V/230V AC motor
- Equipped with by-pass valve to prevent motor overload
- Cast iron pump body with anti-corrosion treatment and paint
- Ease of installation make your maintenance much more convenient
- Motor: Asynchronous motor, single-phase, closed type (protection class IP55), self-ventilated
- Temperature: Min. -20°C/Max.+60°C
- Relative Humidity: Max.90%



#17330660/#17330820
#17330560/#17330720



#17330900/#17331200
#17310801/#1731100/#17311200

Item No.	Flow Rate (GPM/LPM)	Voltage (V)	Power (Watt)	Suction Height (m/ft.)	Max. Pressure (PSI/BAR)	RPM	Inlet/Outlet (Inch)	Package Dimension (cm)	Weight (kgs)
17330660	18/66	120	370	8/2.5	20/1.4	3360	1	30x24x25	8.6
17330820	22/80	120	450	8/2.5	26/1.8	3360	1	30x24x25	8.6
17330900	24/90	120	450	8/2.5	30/2	3360	1	33x21x28	9
17331200	32/120	120	1200	8/2.5	30/2	3360	1	39x22x30	11
17330560	15/57	230	370	8/2.5	20/1.4	3360	1	30x24x25	8.6
17330720	20/72	230	450	8/2.5	26/1.8	3360	1	30x24x25	8.6
17310801	22/80	230	450	8/2.5	30/2	3360	1	33x21x28	9
17311000	26/100	230	750	8/2.5	30/2	3360	1	39x22x30	10
17311200	32/120	230	1100	8/2.5	30/2	3360	1	39x22x30	11



Oil Pump

AC Gear-type Oil Pump

- Internal gear electric pumps for the various requirements of pumping oils and lubricants
- Moto: IP55 protection class
- Die-cast aluminum pump body, Sintered steel gears
- By-pass integrated into the pump body
- Viscosity up to 10,000 SUS (Saybolt Universal Second)/2000cst
- Suction height: 2m/6.5ft.
- Equipped with a relief valve device



#17320500/#17320501
#17320400/#17320401



#17320100/#17320101/#17320180
#17320900/#17320901/#17320140

Item No.	Flow Rate (Quarts/min. /LPM)	Voltage [V]	Power (Watt)	Pressure (PSI/BAR)	Inlet/Outlet (Inch)	Package Dimension (cm)	Weight [kgs]
17320100	11/10	120	550	175/12	1	43x23x30	14
17320101	11/10	120	750	360/25	1	43x23x30	14
17320180	18/17	120	750	175/12	1	43x23x30	14
17320500	52/50	120	1100	72/5	1	43x27x30	22
17320501	52/50	120	1500	145/10	1	43x27x30	22
17320900	10/9	230	550	175/12	1	43x23x30	14
17320901	10/9	230	750	360/25	1	43x23x30	14
17320140	15/14	230	750	175/12	1	43x23x30	14
17320400	42/40	230	1100	145/10	1	43x27x30	22
17320401	42/40	380	1100	145/10	1	43x27x30	22

DC Oil Pump

- Sintered steel gears, bypass valve incorporated in pump body
- Protection motor IP55
- Battery connection cables with fuse available
- Viscosity up to 3,000 SUS (Saybolt Universal Second)/500cst
- Suction height: 2m/6.5ft.



Item No.	Flow Rate (Quarts/min. /LPM)	Voltage [V]	Pressure (PSI/BAR)	Inlet/Outlet (Inch)	Package Dimension [cm]	Weight [kgs]
17520100	11/10	12	60/4	3/4	28x18x16	3.8
17520101	11/10	24	60/4	3/4	28x18x16	3.8