

860 | SPRING DRIVEN HOSE REEL

- Heavy ribbed steel plate to ensure strong support.
- Special swivel joint for easy maintenance and repair.
- Ball bearing swivel joint structure, largely reducing the friction between swivel spool and swivel body.



Ball Bearing Swivel
Easily disassembles the swivel spool for maintenance and repair



Corrosion-Resistant
Heavy-duty steel construction with corrosion resistant powder coating



Adjustable Double Guide Arm
Offers the greatest amount of stability and versatile adjustments

Robust Latch
Strong latch mechanism assures long service life

Center-Located Spring
Spring locates in the middle to ensure stability

Strengthened Frame
Heavy duty structure for durable use in critical environment

Hybrid Design
Wide profile combined with strong design assures maximum service life

L860

860 | SPRING DRIVEN HOSE REEL

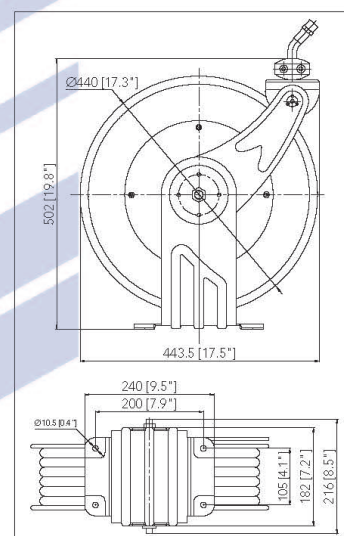
- The reels incorporate metal forms to ensure the greatest possible strength and functions equally well in both mobile and permanent mount application.



M860



H860



LOW PRESSURE AIR/WATER REELS

| Item No. | Hose I.D. | Hose Length | Working Pressure | Inlet/Outlet | Hose Material | Package | Weight | Q'TY 20°C/Y |
|----------|-----------|-------------|------------------|--------------|---------------|--------------------------------|-------------------|-------------|
| L860152 | 1/4" | 50' / 15m | 300psi / 20bar | 1/4" | NBR Rubber | 20.1"x10.4"x20.3" / 52x27x52cm | 56.4lbs / 22kgs | 396pcs |
| L860153 | 3/8" | 50' / 15m | 300psi / 20bar | 3/8" | NBR Rubber | 20.1"x10.4"x20.3" / 52x27x52cm | 58.6lbs / 22.5kgs | 396pcs |
| L860154 | 1/2" | 50' / 15m | 300psi / 20bar | 1/2" | NBR Rubber | 20.1"x10.4"x20.3" / 52x27x52cm | 60.8lbs / 25kgs | 396pcs |

Hose maximum temperature 176°F (80°C).

The hose length measurement is from the connection part.

MEDIUM PRESSURE WATER/OIL REELS

| Item No. | Hose I.D. | Hose Length | Working Pressure | Inlet/Outlet | Hose Material | Package | Weight | Q'TY 20°C/Y |
|----------|-----------|-------------|------------------|--------------|------------------------|--------------------------------|-------------------|-------------|
| M860152 | 1/4" | 50' / 15m | 3260psi / 225bar | 1/4" | S.A.E.100R1 Wire Braid | 20.1"x10.4"x20.3" / 52x27x52cm | 62.6lbs / 24kgs | 396pcs |
| M860153 | 3/8" | 50' / 15m | 2610psi / 180bar | 3/8" | S.A.E.100R1 Wire Braid | 20.1"x10.4"x20.3" / 52x27x52cm | 62.4lbs / 24.5kgs | 396pcs |
| M860154 | 1/2" | 50' / 15m | 2320psi / 160bar | 1/2" | S.A.E.100R1 Wire Braid | 20.1"x10.4"x20.3" / 52x27x52cm | 64.8lbs / 25kgs | 396pcs |

Hose maximum temperature 210°F (100°C).

The hose length measurement is from the connection part.

HIGH PRESSURE GREASE/HYDRAULIC OIL REELS

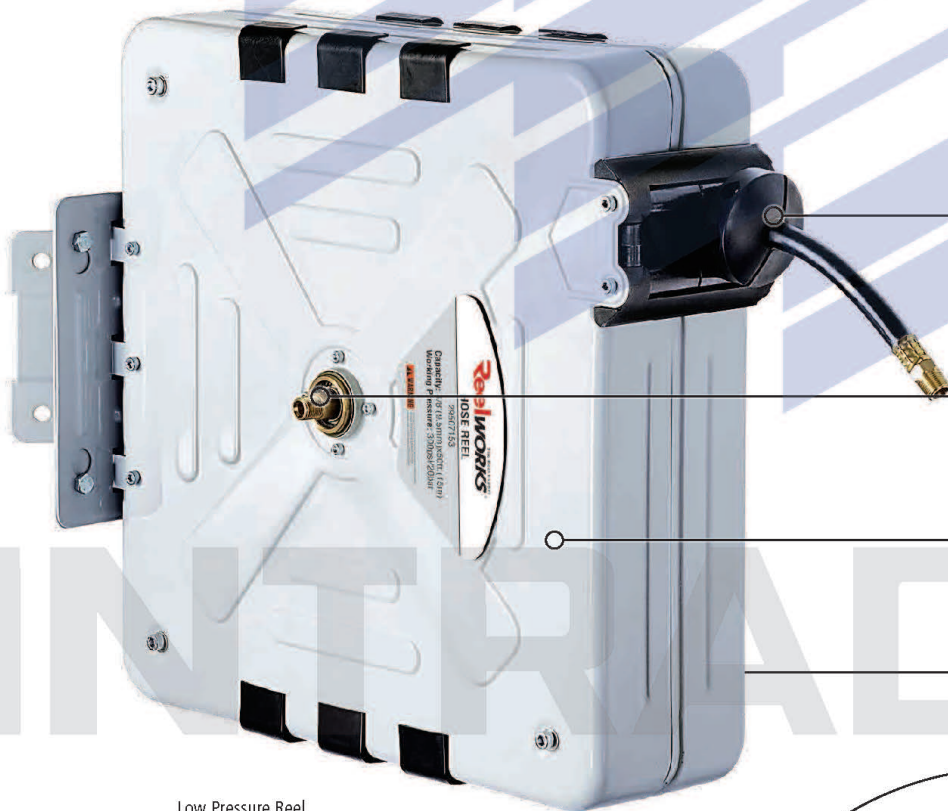
| Item No. | Hose I.D. | Hose Length | Working Pressure | Inlet/Outlet | Hose Material | Package | Weight | Q'TY 20°C/Y |
|----------|-----------|-------------|------------------|--------------|------------------------|--------------------------------|-------------------|-------------|
| H860152 | 1/4" | 50' / 15m | 5800psi / 400bar | 1/4" | S.A.E.100R2 Wire Braid | 20.1"x10.4"x20.3" / 52x27x52cm | 62.5lbs / 24.5kgs | 396pcs |
| H860153 | 3/8" | 50' / 15m | 4785psi / 330bar | 3/8" | S.A.E.100R2 Wire Braid | 20.1"x10.4"x20.3" / 52x27x52cm | 68.6lbs / 25kgs | 396pcs |

Hose maximum temperature 210°F (100°C).

The hose length measurement is from the connection part.

2950 | SPRING DRIVEN HOSE REEL

- Perfect for application in industries, vehicle repair & maintenance workshops.
- Spring tension easily adjustable from the outside.
- Designed to transfer air, water, oil and grease.
- Compact size and easy installation.
- Simple hose replacement without dismantling the reel.
- 60" / 1.5m lead-in hose.



Low Pressure Reel

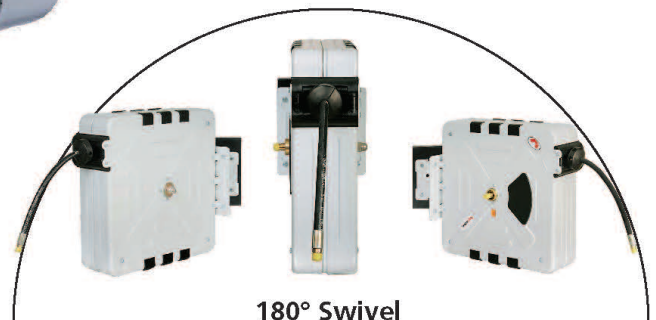


Hose Stopper
Automatically stops retracting hose for safety

Long Service Swivel
High quality stress free swivel assures long service life

Hose Replacement
Simple hose replacement without dismantling the reel

Reinforced Steel Flange
The steel-stamped flange is reinforced for strength



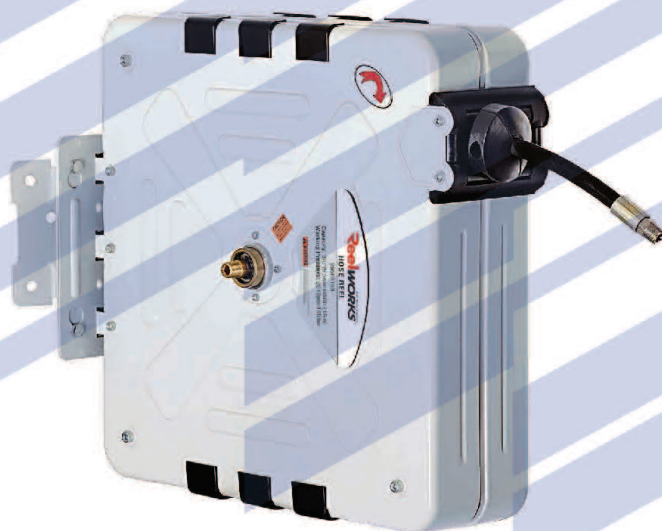
180° Swivel

2950 | SPRING DRIVEN HOSE REEL

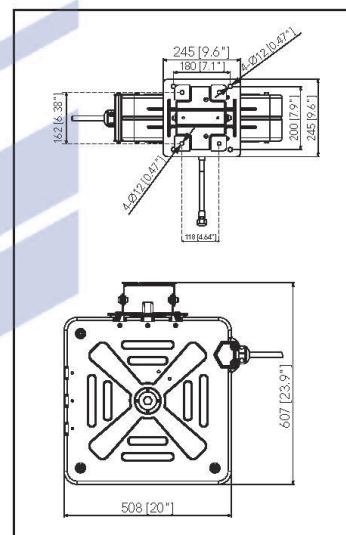
- Perfect for application in industries, vehicle repair & maintenance workshops.
- Spring tension easily adjustable from the outside.
- Designed to transfer air, water, oil and grease.
- Compact size and easy installation.
- Simple hose replacement without dismantling the reel.
- 60" / 1.5m lead-in hose.



110° Swivel Base
Wall and floor mounting



Medium / High Pressure Reels



LOW PRESSURE AIR/WATER REELS

| Item No. | Hose I.D. | Hose Length | Working Pressure | Inlet/Outlet | Hose Material | Package | Weight | Q'TY 20°C/Y |
|----------|-----------|-------------|------------------|--------------|---------------|----------------------------|-------------------|-------------|
| 29507153 | 3/8" | 50' / 15m | 300psi / 20bar | 3/8" | NBR Rubber | 24"x11.8"x24" / 61x30x61cm | 65.2lbs / 29.5kgs | 210pcs |
| 29507154 | 1/2" | 50' / 15m | 300psi / 20bar | 1/2" | NBR Rubber | 24"x11.8"x24" / 61x30x61cm | 68.5lbs / 31.1kgs | 210pcs |

Hose maximum temperature 176°F (80°C).

The hose length measurement is from the connection part.

MEDIUM PRESSURE WATER/OIL REELS

| Item No. | Hose I.D. | Hose Length | Working Pressure | Inlet/Outlet | Hose Material | Package | Weight | Q'TY 20°C/Y |
|----------|-----------|-------------|------------------|--------------|------------------------|----------------------------|-------------------|-------------|
| 29508153 | 3/8" | 50' / 15m | 2610psi / 180bar | 3/8" | S.A.E.100R1 Wire Braid | 24"x11.8"x24" / 61x30x61cm | 71.3lbs / 32.3kgs | 210pcs |
| 29508154 | 1/2" | 50' / 15m | 2320psi / 160bar | 1/2" | S.A.E.100R1 Wire Braid | 24"x11.8"x24" / 61x30x61cm | 74.6lbs / 33.8kgs | 210pcs |

Hose maximum temperature 210°F (100°C).

The hose length measurement is from the connection part.

HIGH PRESSURE GREASE REELS

| Item No. | Hose I.D. | Hose Length | Working Pressure | Inlet/Outlet | Hose Material | Package | Weight | Q'TY 20°C/Y |
|----------|-----------|-------------|------------------|--------------|------------------------|----------------------------|-------------------|-------------|
| 29509152 | 1/4" | 50' / 15m | 5800psi / 400bar | 1/4" | S.A.E.100R2 Wire Braid | 24"x11.8"x24" / 61x30x61cm | 73.5lbs / 33.3kgs | 210pcs |
| 29509153 | 3/8" | 50' / 15m | 4785psi / 330bar | 3/8" | S.A.E.100R2 Wire Braid | 24"x11.8"x24" / 61x30x61cm | 76.8lbs / 34.8kgs | 210pcs |

Hose maximum temperature 210°F (100°C).

The hose length measurement is from the connection part.

HR821 & HR825 Series | SINGLE GUIDE ARM SPRING DRIVEN HOSE REEL

Hose can be **STOPPED AT ANY POINT** as users desire.

With more secure experience,
The **RETRACTION** time is
twice **SLOW** than usual.

MODULAR DESIGN makes
inventory and maintenance
more convenient.

PATENTED



Note: Except wearing parts like O-ring & hose, etc.



The plate cover is standard or optional.



Pulling and retraction are smoothly,
easily and effortlessly



The speed control device makes an
automatic rewinding of hoses in
constant speed and safer way

For Oxygen-acetylene Reels



For USA



For Europe

HR821 & HR825 Series | SINGLE GUIDE ARM SPRING DRIVEN HOSE REEL

LOW PRESSURE AIR/WATER REELS

| Item No. | Hose I.D. | Hose Length | Working Pressure | Inlet/Outlet | Hose Material | Package | Weight | Q'TY 20'C/Y |
|----------|-----------|-------------|------------------|--------------|----------------|----------------|---------|-------------|
| HR821.10 | 3/8" | 15m | 20bar | 3/8" BSP | Hybrid Polymer | 51.5x25.5x60cm | 18.4kgs | 390pcs |
| HR821.11 | 1/2" | 15m | 20bar | 1/2" BSP | Hybrid Polymer | 51.5x25.5x60cm | 20.0kgs | 390pcs |
| HR821.12 | 3/8" | 15m | 20bar | 3/8" BSP | NBR Rubber | 51.5x25.5x60cm | 18.4kgs | 390pcs |
| HR821.13 | 1/2" | 15m | 20bar | 1/2" BSP | NBR Rubber | 51.5x25.5x60cm | 20.0kgs | 390pcs |
| HR825.18 | 3/8" | 20m | 20bar | 3/8" BSP | Hybrid Polymer | 56x25.5x65cm | 21.5kgs | 324pcs |
| HR825.19 | 3/8" | 25m | 20bar | 3/8" BSP | Hybrid Polymer | 56x25.5x65cm | 22.5kgs | 324pcs |
| HR825.20 | 1/2" | 20m | 20bar | 1/2" BSP | Hybrid Polymer | 56x25.5x65cm | 23.5kgs | 324pcs |
| HR825.21 | 3/8" | 20m | 20bar | 3/8" BSP | NBR Rubber | 56x25.5x65cm | 21.5kgs | 324pcs |
| HR825.22 | 3/8" | 25m | 20bar | 3/8" BSP | NBR Rubber | 56x25.5x65cm | 22.5kgs | 324pcs |
| HR825.23 | 1/2" | 20m | 20bar | 1/2" BSP | NBR Rubber | 56x25.5x65cm | 23.5kgs | 324pcs |

Maximum temperature 140°F (60°C) for hybrid polymer hose. Maximum temperature 176°F (80°C) for NBR hose.

The hose length measurement is from the connection part.

LOW PRESSURE UREA/DEF REELS

Stainless steel full flow swivel, FPM made seals and EPDM hose designed to transfer UREA/DEF.

| Item No. | Hose I.D. | Hose Length | Working Pressure | Inlet/Outlet | Hose Material | Package | Weight | Q'TY 20'C/Y |
|----------|-----------|-------------|------------------|--------------|---------------|--------------|---------|-------------|
| HR825.28 | 3/4" | 10m | 10bar | 3/4" BSP | EPDM Rubber | 56x25.5x65cm | 23.5kgs | 324pcs |

Hose maximum temperature 176°F (80°C).

The hose length measurement is from the connection part.

LOW PRESSURE FUEL REELS

| Item No. | Hose I.D. | Hose Length | Working Pressure | Inlet/Outlet | Hose Material | Package | Weight | Q'TY 20'C/Y |
|----------|-----------|-------------|------------------|--------------|---------------|--------------|---------|-------------|
| HR825.29 | 3/4" | 10m | 10bar | 3/4" BSP | NBR Rubber | 56x25.5x65cm | 23.5kgs | 324pcs |

Hose maximum temperature 176°F (80°C).

The hose length measurement is from the connection part.

OXYGEN-ACETYLENE REELS

| Item No. | Hose I.D. | Hose Length | Working Pressure | Inlet/Outlet | Hose Material | Package | Weight | Q'TY 20'C/Y |
|----------|-----------|-------------|------------------|--------------|---------------|--------------|---------|-------------|
| HR825.30 | 1/4" | 20m | 20bar | 1/4" BSP | NBR Rubber | 56x25.5x65cm | 26.5kgs | 324pcs |
| HR825.31 | 1/4" | 20m | 20bar | 3/8" BSP | NBR Rubber | 56x25.5x65cm | 28.0kgs | 324pcs |

Hose maximum temperature 176°F (80°C).

The hose length measurement is from the connection part.

MEDIUM PRESSURE WATER/OIL REELS

| Item No. | Hose I.D. | Hose Length | Working Pressure | Inlet/Outlet | Hose Material | Package | Weight | Q'TY 20'C/Y |
|----------|-----------|-------------|------------------|--------------|------------------------|----------------|---------|-------------|
| HR821.14 | 3/8" | 15m | 180bar | 3/8" BSP | S.A.E.100R1 Wire Braid | 51.5x25.5x60cm | 21.5kgs | 390pcs |
| HR821.15 | 1/2" | 15m | 160bar | 1/2" BSP | S.A.E.100R1 Wire Braid | 51.5x25.5x60cm | 23.2kgs | 390pcs |
| HR825.24 | 3/8" | 20m | 180Bar | 3/8" BSP | S.A.E.100R1 Wire Braid | 56x25.5x65cm | 25.5kgs | 324pcs |
| HR825.25 | 1/2" | 20m | 160Bar | 1/2" BSP | S.A.E.100R1 Wire Braid | 56x25.5x65cm | 27.0kgs | 324pcs |

Hose maximum temperature 210°F (100°C).

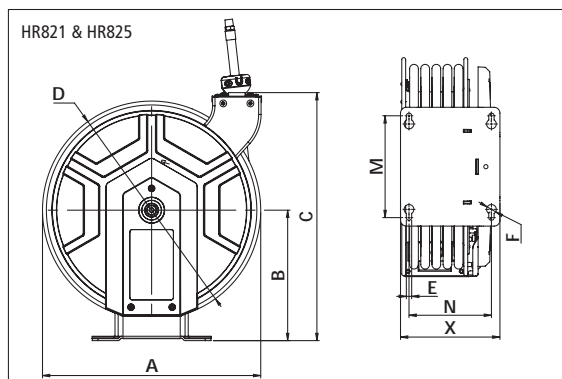
The hose length measurement is from the connection part.

HIGH PRESSURE GREASE/HYDRAULIC OIL REELS

| Item No. | Hose I.D. | Hose Length | Working Pressure | Inlet/Outlet | Hose Material | Package | Weight | Q'TY 20'C/Y |
|----------|-----------|-------------|------------------|--------------|------------------------|----------------|---------|-------------|
| HR821.16 | 1/4" | 15m | 400bar | 1/4" BSP | S.A.E.100R2 Wire Braid | 51.5x25.5x60cm | 22.0kgs | 390pcs |
| HR821.17 | 3/8" | 15m | 330bar | 3/8" BSP | S.A.E.100R2 Wire Braid | 51.5x25.5x60cm | 23.2kgs | 390pcs |
| HR825.26 | 1/4" | 20m | 400bar | 1/4" BSP | S.A.E.100R2 Wire Braid | 56x25.5x65cm | 27.5kgs | 324pcs |
| HR825.27 | 3/8" | 20m | 330bar | 3/8" BSP | S.A.E.100R2 Wire Braid | 56x25.5x65cm | 31.2kgs | 324pcs |

Hose maximum temperature 210°F (100°C).

The hose length measurement is from the connection part.



REEL DIMENSIONS

| Series No. | A | B | C | D | E | F | M | N | X |
|------------|-------|-------|---------|-------|------|------|-------|-------|-------|
| HR821 | 450mm | 269mm | 511.5mm | 450mm | 11mm | 20mm | 210mm | 170mm | 205mm |
| HR825 | 500mm | 294mm | 554mm | 500mm | 11mm | 20mm | 210mm | 170mm | 205mm |